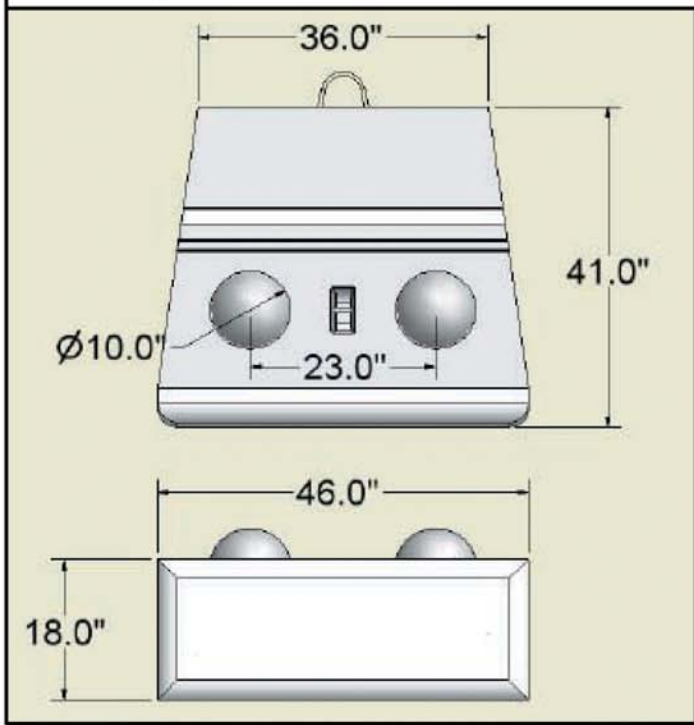
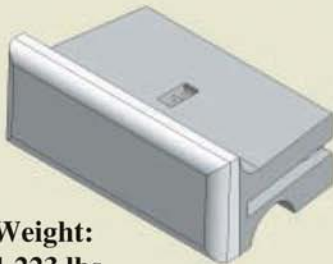


Retaining Middle 41" – General Dimensions



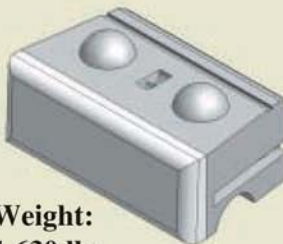
Redi-Rock blocks come in different block styles, colors, textures, and sizes. General dimensions and sizes are shown here.

TOP BLOCK



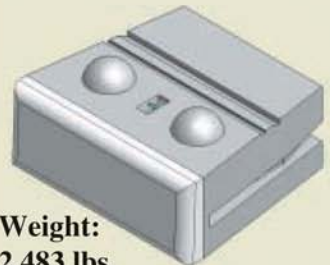
Weight:
1,223 lbs.

MIDDLE BLOCK 28"



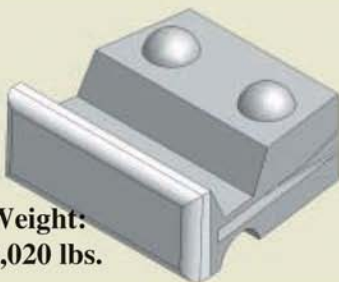
Weight:
1,630 lbs.

BOTTOM BLOCK



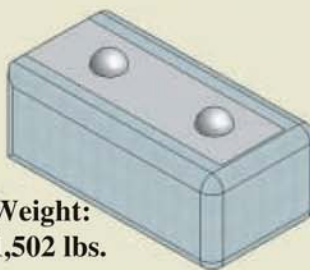
Weight:
2,483 lbs.

PLANTER BLOCK



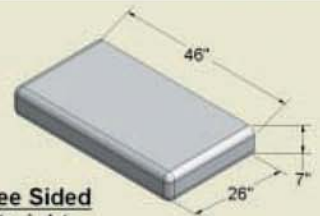
Weight:
2,020 lbs.

CORNER BLOCK



Weight:
1,502 lbs.

STEPS & CAPS



Three Sided
Straight

Weight: 655 lbs.